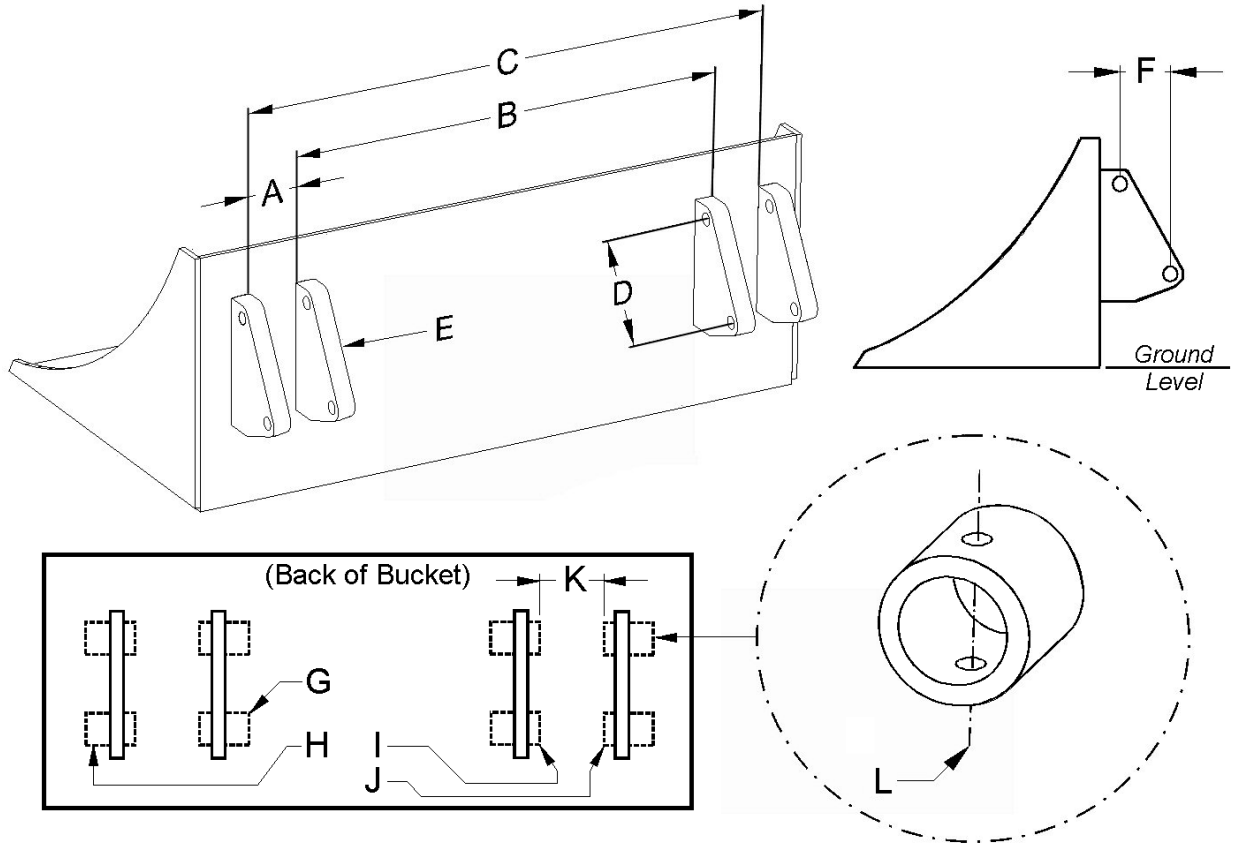


ALDOMI (PIN-ON LOADER) INFORMATION SHEET

Dealership Name: _____ Date: _____

Contact Name & Phone #: _____

Loader Brand & Model: (e.g. Kubota LA-852 Pin On) _____



**Double check dimensions to help Guarantee Accuracy. Measurements must be taken from the Loader bucket.
*(Use Accurate measuring device such as a Caliper)**

_____ (A) Inside to inside between plates

_____ (B) Inside to inside of inner plates

_____ (C) Inside to inside of outer plates

_____ (D) Pin to pin centers

_____ (E) Plate thickness

_____ (F) Offset distance between pins

_____ (G) Outer sleeve length (inner plates) - if any

_____ (H) Outer sleeve length (outer plates) - if any

_____ (I) Inner sleeve length (inner plates) - if any

_____ (J) Inner sleeve length (outer plates) - if any

_____ (K) Gap between inner sleeves - if any

_____ (L) Bolt hole size & location on sleeves - if any

(Specify if located on 'G' or 'H' sleeves)

Pin Diameter: _____

Note any oddities or comments regarding loader information not specified: _____

Aldomi, Inc. reserves the right, when building to these specifications, to decline responsibility of unit replacement, if dimensions listed above are proven to be incorrect resulting in a mis-fitting unit. Aldomi's warranty for the material and workmanship of the unit remains in effect.

Signature: _____ Date: _____